

The Broadway

Plot 25



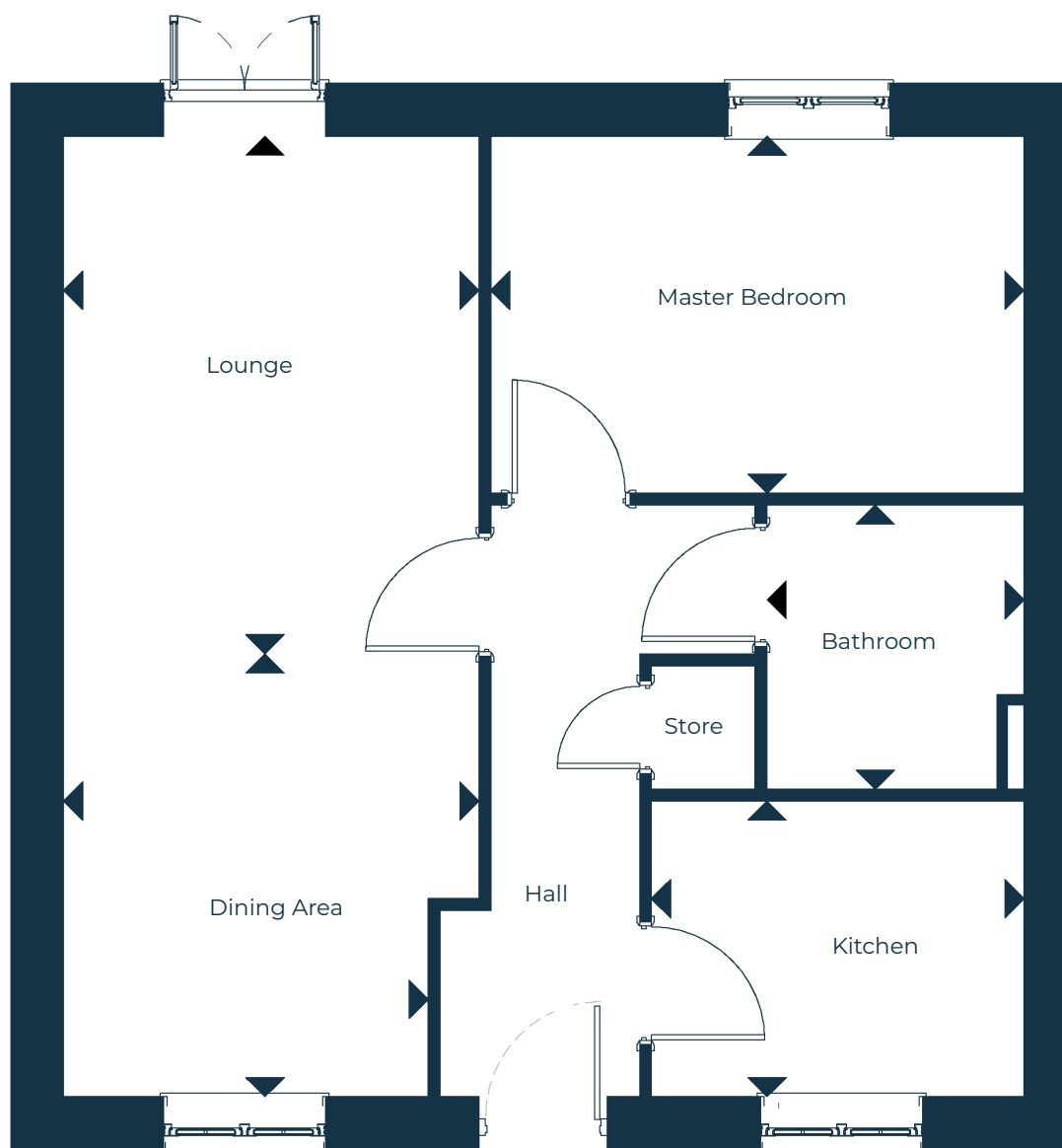
LIDDYMORE PARK

Watchet | West Somerset

Ground Floor

Kitchen	2.82m x 2.21m	9'3" x 7'3"
Lounge	3.09m x 3.82m	10'1" x 12'6"
Dining Area	3.09m* / 2.70m* x 3.27m	10'1"* / 8'3"* x 10'9"
Master Bedroom	3.96m x 2.73m	12'11" x 8'11"
Bathroom	1.92m x 2.02m	6'3" x 6'7"

* Minimum / maximum dimensions supplied for irregular shaped rooms



Ground Floor

Please note this plot may be handed (mirror image), please speak with a Sales Advisor for more information.