



The Polden

A charming 3 bedroom home

SUMMERFIELD
HOMES 

The Polden

Plots 6, 7, 12, 13, 20 & 21

864 sq.ft/80.26 sq.m

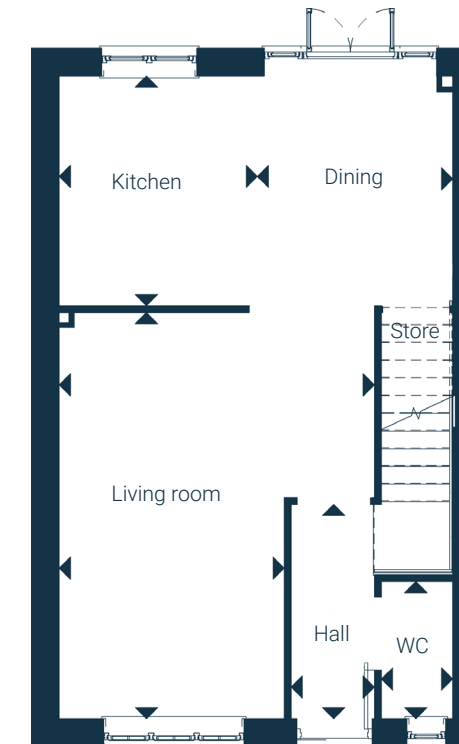
Ground Floor

Hall	1.05m x 2.70m	3'5" x 8'10"
Living room	2.83m (3.97m*) x 5.12m	9'3" (13'0"*) x 16'9"
Kitchen	2.39m x 2.90m	7'10" x 9'6"
Dining	2.56m x 2.90m	8'4" x 9'6"
WC	0.90m x 1.73m	2'11" x 5'8"

First Floor

Master Bedroom	2.70m x 3.46m (4.12m*)	8'10" x 11'4" (13'6"*)
Ensuite	2.13m x 1.59m	6'11" x 5'2"
Bedroom 2	2.89m x 2.88m	9'5" x 9'5"
Bedroom 3	2.17m x 2.37m	7'1" x 7'9"
Bathroom	1.98m x 1.86m	6'5" x 6'1"

*Maximum dimensions supplied for irregular shaped rooms



Ground Floor



First Floor

