



### Ground Floor

Living Room	3.67m x 2.66m	8' 9" x 16' 0"
Kitchen	2.68m x 4.88m	11' 9" x 8' 8"
Cloakroom	0.95m x 1.16m	3' 1" x 3' 9"

### First Floor

Bedroom 1	3.67m x 2.66m	11' 9" x 8' 8"
Bedroom 2	3.67m x 2.62m	11' 9" x 8' 7"
Bathroom	1.93m x 1.86m	6' 3" x 6' 1"

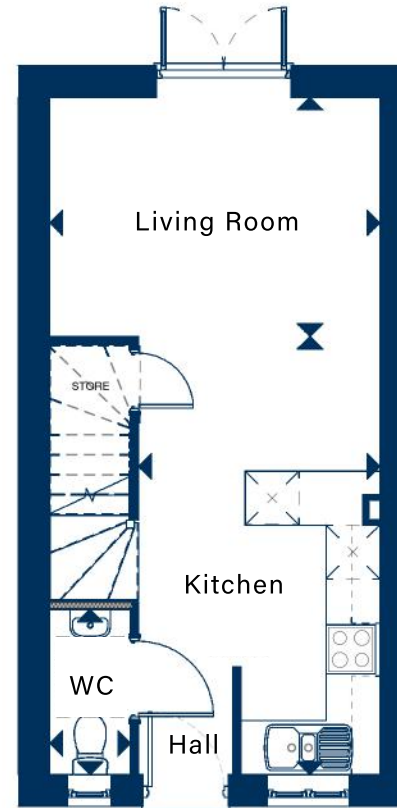
\*Maximum dimensions supplied in irregular shaped rooms

#### Floor Plans & Dimensions

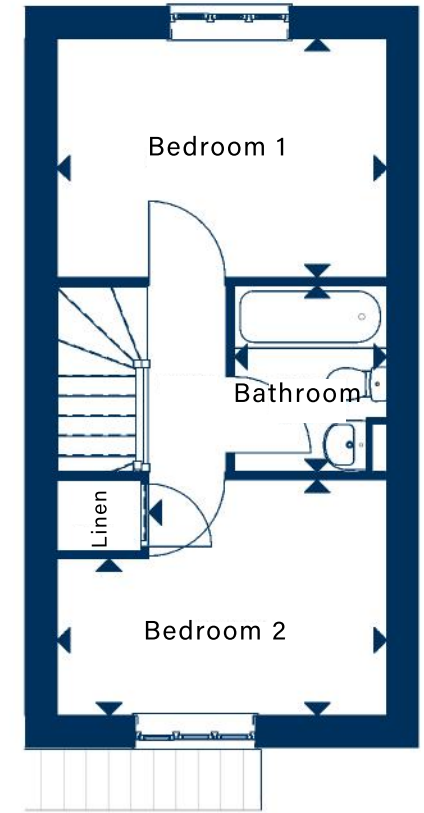
We have provided floor plans to show the approximate dimensions of the properties on this site, as each property is built individually and internal finishes may vary during the course of construction. External finishes will vary from plot to plot. Some plots may be handed versions of the illustrations (mirror image).

#### Elevations and Internal Finishes

The artist impressions/CGI's and site plan are indicative. The colours and finish of the various external elevations may vary and are subject to change/availability. The area surrounding each property may also differ from that shown. Please be sure to check with the Summerfield Homes sales representative for details of the finishes relating to your chosen property at the time of reservation.



Ground Floor



First Floor

# The Cleeve

## 2 Bedrooms

### Plots 170 & 171

