

The Broadway

Plots 13, 14 (*handed*) & 15 (*detached*)

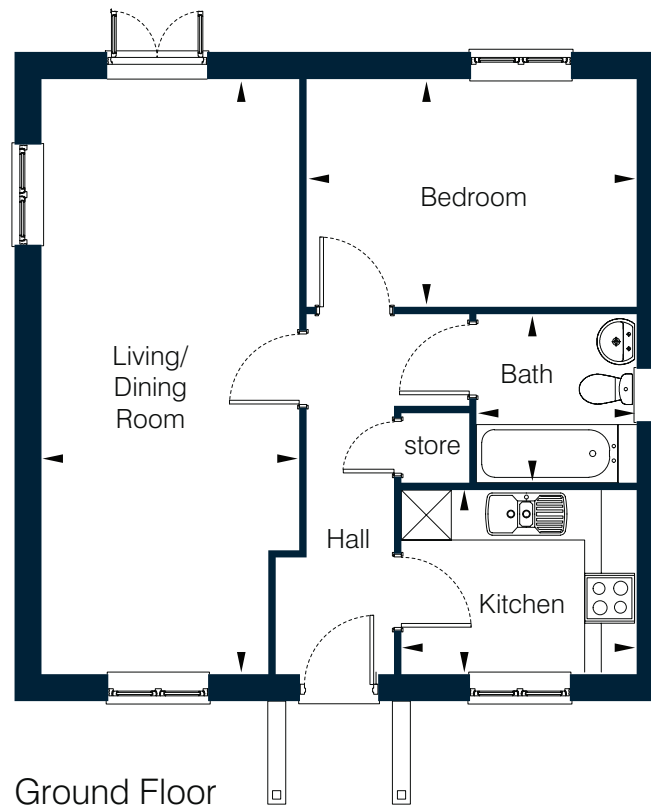
Ground Floor

Entrance Hall			
Kitchen	2.83m x 2.21m	9' 3" x 7' 3"	
Living/Dining	3.10m x 7.15m	10' 3" x 23' 6"	
Bedroom	3.97m x 2.74m	13' 0" x 9' 0"	
Bathroom	1.92m x 2.02m	6' 3" x 6' 7"	

Overall area 51sq.m / 551sq.ft

Please note that these floor plans show approximate dimensions only. Dimensions may vary within the NHBC guidelines, as each property is built individually and precise internal finishes may vary during the course of construction. External finishes will vary from plot to plot. Please refer to our full disclaimer on page 19 of this brochure.

External finishes, materials, landscaping, positions of garages may also vary. Properties can also be constructed as mirror images of that shown. Please ask if you require further details or clarification.



Ground Floor