

# MODERN EFFICIENT FLEXIBLE OFFICE SPACE



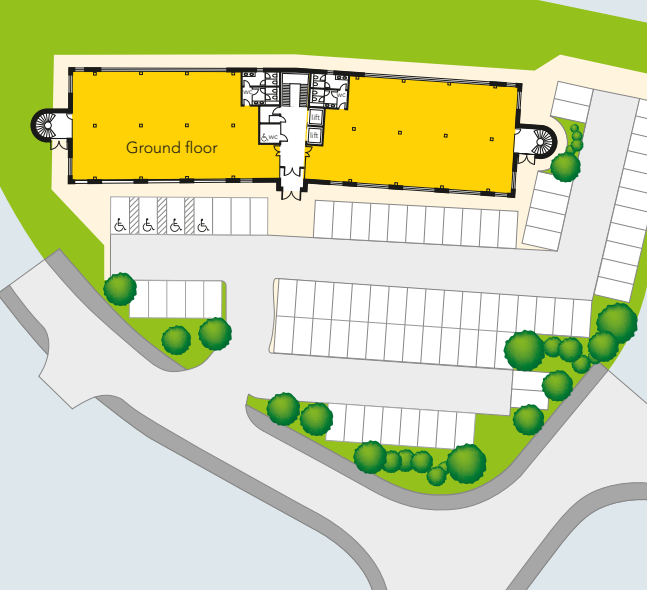
EMPEROR HOUSE  
exeter business park

THE PERFECT  
ENVIRONMENT  
FOR YOUR BUSINESS

New Grade A offices from  
7,360 up to 22,660 sq.ft.

[www.exeterbusinesspark.co.uk](http://www.exeterbusinesspark.co.uk)

Computer generated image of Emperor House.

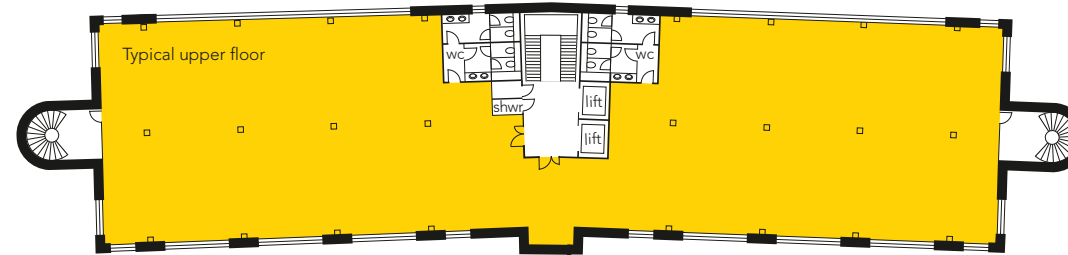


# MODERN EFFICIENT FLEXIBLE OFFICE SPACE

## DEVELOPERS SPECIFICATION

Emperor House is fully serviced and has detailed planning consent for offices. It will provide for the following amenities:

- Raised access flooring
- Divisible floor layouts
- Suspended ceilings with high frequency lighting
- Self-contained wash room areas including shower facilities
- VRV comfort cooling (heat recovery)
- 2 x 8-person passenger lifts
- 80 car parking spaces



## ACCOMMODATION

Ground floor	7,360 sq.ft.	685 sq.m.
First floor	7,650 sq.ft.	710 sq.m.
Second floor	7,650 sq.ft.	710 sq.m.
<b>Total</b>	<b>22,660 sq.ft</b>	<b>2,105 sq.m.</b>

Each floor is sub-divisible into two self-contained suites of approximately 3,700 sq.ft. (344 sq.m.)



A development by



# SUMMERFIELD

Please contact

**alder king**  
PROPERTY CONSULTANTS  
01392 353080  
www.alderking.com

**JONES LANG LASALLE**  
01392 423696  
www.joneslanglasalle.co.uk

Important Notice. These particulars do not constitute an offer or contract and although they are believed to be correct their accuracy cannot be guaranteed and they are expressly excluded from any contract. AK/JLL/Hollister 1068 10/12