



COSSINGTON

3 BEDROOM HOME

These are for illustration purposes only. The elevations and finishes will vary from plot to plot. Please check with the sales representative before reserving

**SUMMERFIELD
HOMES**



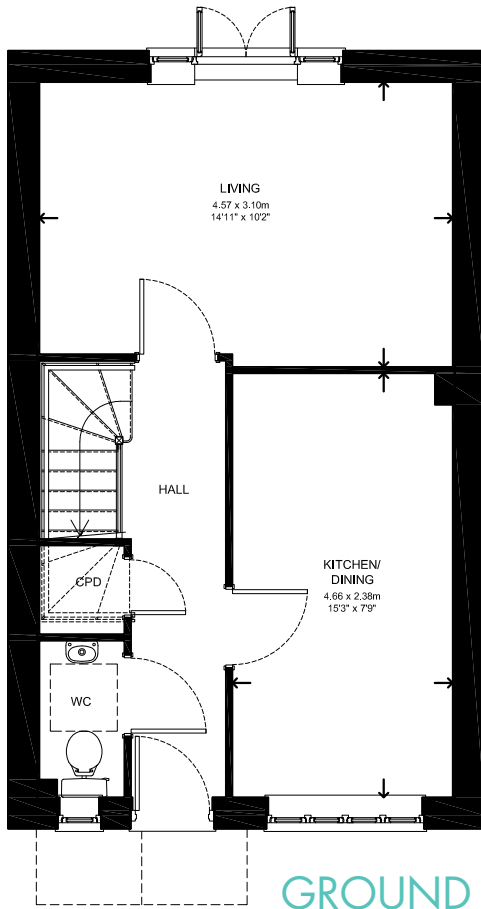
COSSINGTON

GROUND FLOOR

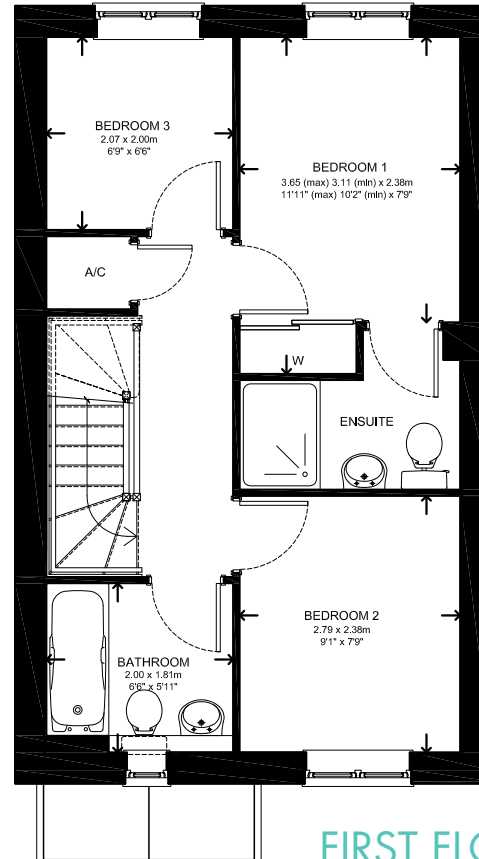
Kitchen/Dining	4.66 x 2.38m	15'3" x 7'9"
Living Room	4.57 x 3.10m	14'11" x 10'2"

FIRST FLOOR

Bedroom 1	3.65 ^{max} x 2.38m	11'11" ^{max} x 7'9"
	3.11 ^{min}	10'2" ^{min}
Bedroom 2	2.79 x 2.38m	9'1" x 7'9"
Bedroom 3	2.07 x 2.00m	6'9" x 6'6"
Bathroom	2.00 x 1.81m	6'6" x 5'11"



GROUND FLOOR



FIRST FLOOR

Floor Plans & Dimensions We have provided floor plans to show the approximate dimensions of the properties on this site. The dimensions may vary within the NHBC guidelines, as each property is built individually and precise internal finishes may vary during the course of construction. External finishes will vary from plot to plot. Some plots may be handed versions of the illustrations (mirror image) and may be detached, semi-detached or terraced. Layouts depicted for the cloakroom, kitchen, bathroom and the location of electrical items and windows are indicative and for illustration purposes only, and therefore should not be relied upon.

Elevations and Internal Finishes Artist impressions/CGI's have been used to represent the houses to be built on this site. The colours and finish of the various external elevations may vary from house to house. The area surrounding each property may also differ from that shown. Please be sure to check with our Sales Representative for details of the finishes relating to your chosen property at the time of reservation.

Issue 1



www.summerfield.co.uk
01823 257 961

