

Preliminary drawings and measurements

The Alcombe

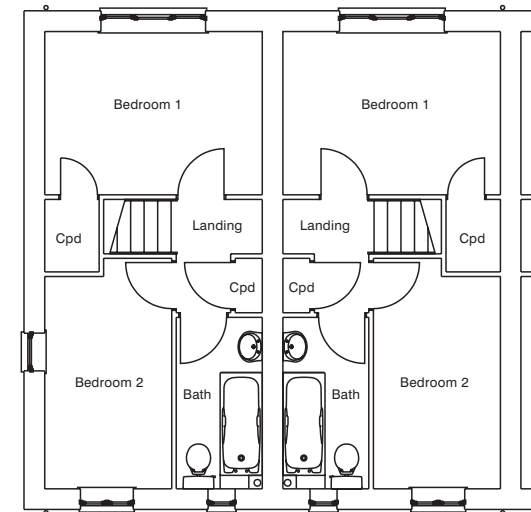
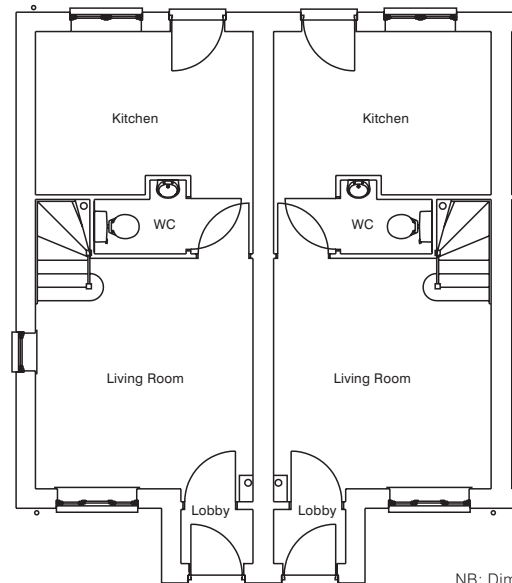
Ground Floor

- Entrance Porch
- Kitchen/Dining Room 3.59m x 2.68m
- Living Room 3.79m x 3.59m
- Cloakroom

First Floor

- Bedroom 1 3.59m x 2.8m
- Bedroom 2 3.49m x 2.08m
- Bathroom
- Allocated parking space

*NB Maximum dimensions are given in irregular shaped rooms.  
Dimensions quoted may vary by up to 40mm due to wall finish.*



NB: Dimensions are approximate and will vary subject to build. Puchasers should not rely on these dimensions for floor coverings. The dimensions may vary by up to 40mm due to wall finish.



Summerfield SD3, Tauntfield, South Road, Taunton, Somerset TA1 3ND  
Telephone 01823 257 961

# Preliminary Details

Preliminary drawings and measurements

## The Winsford

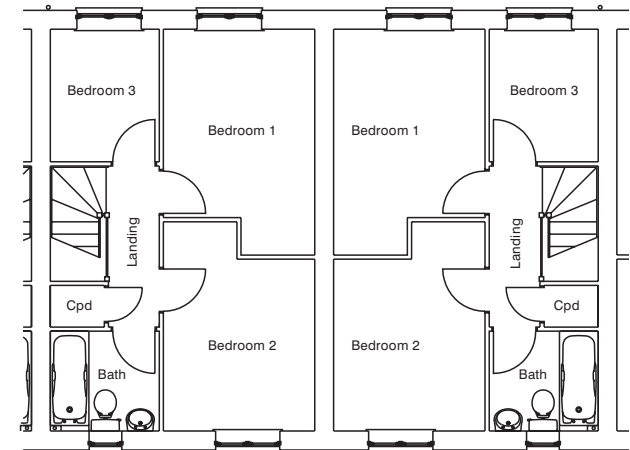
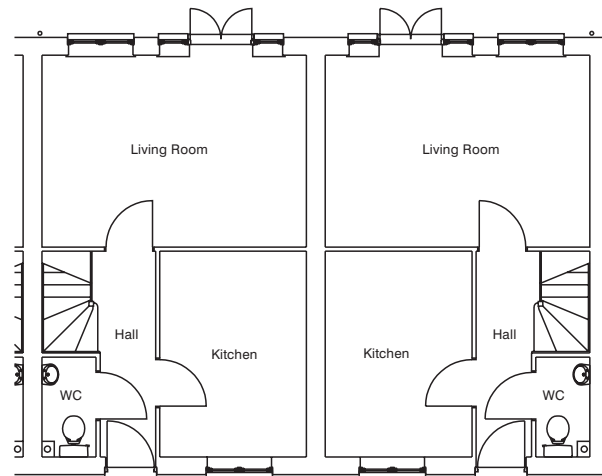
### Ground Floor

Entrance Hall  
Kitchen/Dining room 3.65m x 2.60m  
Living Room 4.77m x 3.44m  
Cloakroom

### First Floor

Bedroom 1 3.40m x 2.7m  
Bedroom 2 3.08m x 2.70m  
Bedroom 3 2.37m x 1.90m  
Bathroom  
Allocated parking space

*NB Maximum dimensions are given in irregular shaped rooms.  
Dimensions quoted may vary by up to 40mm due to wall finish.*





# HAYFIELD CLOSE

## Site Plan

The site consists of 11 two and three bedroom terraced houses



Summerfield SD3, Taunfield, South Road, Taunton, Somerset TA1 3ND  
Telephone 01823 257 961





# HAYFIELD CLOSE

## Preliminary Details

A range of 2 and 3 bedroom houses with gas fired central heating and upvc double glazing.

This is a MY Home development of affordable homes. The scheme will provide a mix of 2 and 3 bedroom houses built in the village of Alcombe, on the outskirts of Minehead. All houses will have the benefit of gas fired central heating, upvc double glazing and high levels of insulation to provide thermally efficient homes. Each property has an allocated parking space.

Alcombe offers a range of local amenities, whilst the adjoining town of Minehead offers a further range of shops, leisure facilities and schooling for all ages. Minehead is a delightful coastal town with rustic Exmoor as a stunning backdrop. The county town of Taunton is approximately 23 miles away and offers an excellent range of facilities, including access to a main line station, the M5 motorway and a regular bus service.

**my**  
HOME



Summerfield SD3, Taunfield, South Road, Taunton, Somerset TA1 3ND  
Telephone 01823 257 961



## Specification

|                     |  |
|---------------------|--|
| <b>Construction</b> | External elevations will either be brick or render or a mix of both ( <i>depending upon the plot</i> ).<br>Traditional construction.<br>Tiled roofs.   |
| <b>Heating</b>      | Gas fired central heating with Combination boiler  |
| <b>Kitchen</b>      | Range of floor and wall units<br>4 ring stainless steel gas hob<br>Built under stainless steel oven<br>Extractor hood ( <i>over cooker</i> )<br>Single bowl stainless steel sink<br>Tiling to splash areas |
| <b>Bathroom</b>     | White suite<br>Tiling ( <i>600mm high to bath areas and tiling to basin area</i> )<br>Toilet roll holder   |