

THE LOOK OUT

exeter business park

UNIQUE STAND ALONE OFFICE



THE PERFECT ENVIRONMENT FOR YOUR BUSINESS

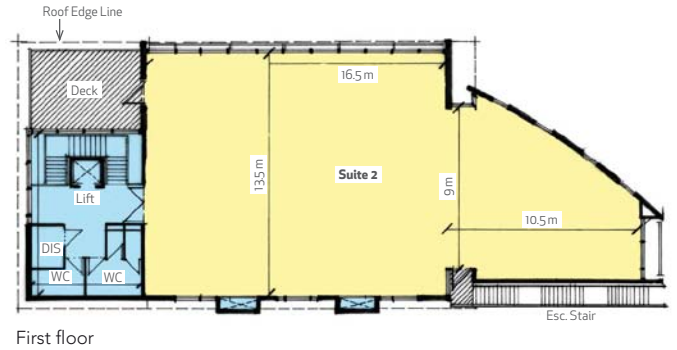
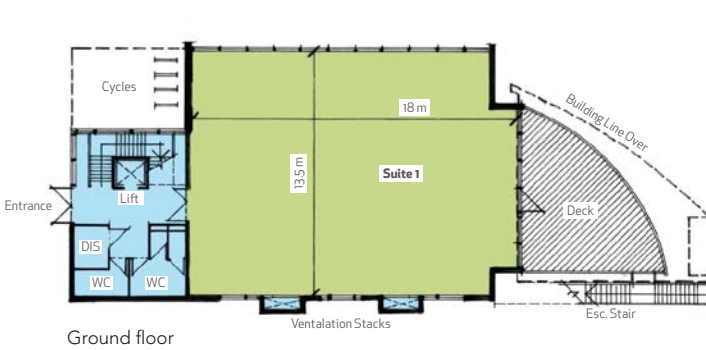
THE LOOK OUT, GRENADIER ROAD

Freehold or Leasehold
Bespoke Prominent Office
from 2,551 up to 5,812 sq.ft. with 20 car spaces
Adjacent to J29 M5

www.exeterbusinesspark.co.uk



THE PERFECT ENVIRONMENT FOR YOUR BUSINESS



Description

The 'Look Out' occupies a prominent position opposite Gadeon House (EDF Energy) with outstanding views south and east of Exeter down the Exe Valley and towards Haldon Hill.

The 'Look Out' will be a two storey building of contemporary style incorporating 20 on site car spaces. The ground floor will access into a balcony decking area providing a place for amenity and functions.

Terms

Available on a freehold basis or on an occupational lease as a whole or floor by floor.

Accommodation

| | | |
|--------------|--------------------|------------------|
| Ground floor | 2,551 sq.ft. | 237 sq.m. |
| First floor | 3,261 sq.ft. | 303 sq.m. |
| Total | 5,812 sq.ft | 540 sq.m. |

For further information

For detailed terms contact the agents:

alder king
PROPERTY CONSULTANTS
01392 353080
www.alderking.com

JONES LANG LASALLE
01392 423696
www.joneslanglasalle.co.uk

A development by
SUMMERFIELD

Important Notice. These particulars do not constitute an offer or contract and although they are believed to be correct their accuracy cannot be guaranteed and they are expressly excluded from any contract. AK/JLL/Hollister 584 02/12